

# Parks and Recreation Facilities Inventory

## III. Parks and Recreation Facilities Inventory

### A. Parks and Recreation Classification System

The purpose of developing a park and recreation classification system for a community is to evaluate the total recreation opportunities that are being made available to the public. Too often, a community will “meet the standard” in terms of acreage, but it may meet this provision through only a single park that does not provide for the entire community. Therefore, a system of parks should be developed that provides a combination of local space such as mini-parks, neighborhood parks and community parks with county-wide space such as linear parks, county parks and support by regional or state parks.

The parks and recreation facilities inventory in this section identifies each park by its park type category and also list the number of specific facilities that are located within each park. Table 7 defines each park by its typical size and service area of each category, population served by each park, typical features and facilities, and the desirable characteristics of each park in these categories. The categories and descriptions were adapted from the Recreation, Park and Open Space Standards and Guidelines that was published by the National Recreation and Park Association in 1987 and 1995.

A park system is generally reviewed and analyzed as a composite of recreation areas, each existing to meet a particular public need. Based on a review of national and regional standards, a parks and recreation area classification system has been developed to reflect the actual conditions and opportunities for Muhlenberg County.

**Table 7: Recommended Park and Recreation Area Classification System**

PARK TYPE	TYPICAL SIZE and SERVICE AREA	ACRES/1,000 POPULATION	TYPICAL FEATURES/ FACILITIES	DESIRABLE CHARACTERISTICS
LOCAL SPACE:				
1. Mini-Park (MP)	+/- 1 Acre 1/8 – ½ Mile Service Radius	0.5 Acre/1,000	Typical facilities may include playgrounds, small multi-use court area, and benches.	Most often provided in association with school facilities.  May also provide open space as needed to serve high density neighborhoods where children do not have adequate yard space.
2. Neighborhood Park (NP)	5-15 Acres  ½-1.0 mile service radius. To serve a population up to 5,000	2.0 Acres/1,000	Suited for intense development.  Typical facilities include field games, court games, playground apparatus, small pools, small neighborhood centers, drinking fountains, and	Easily accessible to neighborhood population (safe walking and bike distance)  May be developed as park/school facility or in conjunction with service agency facility.  May not be needed in areas served by “community”, “county” or “regional” parks.

## Parks and Recreation Facilities Inventory

PARK TYPE	TYPICAL SIZE and SERVICE AREA	ACRES/1,000 POPULATION	TYPICAL FEATURES/ FACILITIES	DESIRABLE CHARACTERISTICS
			restrooms.	
3. Community Parks (CmP)	25-50+ Acres  1.0-2.0 mile service radius  To serve several neighborhoods with populations up to 20,000+.	2.5 Acres/1,000	Typical facilities include all those listed for Neighborhood Parks plus; major swimming pool, field or court game complex, major recreation or community center, etc.  May be an area of natural quality for picnicking, walking, etc.	Capable of providing a range of intensive recreational activities; or, provides one or two activities that attract users from multi-neighborhood areas.  Park should ideally be located at or near a school.  May meet needs of neighborhood park for users within a 1-mile radius.
4. Linear Park (LP)	N/A	N/A	Area developed for one or more varying modes of recreational travel (pleasure driving, hiking, walking, jogging, biking, etc.). May also include active play areas, fitness courses, picnic areas, etc.	Built or natural corridors, such as utility rights-of-way, bluff lines, creek beds, and roads that link other components of the park system or other community facilities (schools, libraries, etc.) with park areas.
5. Special Use-Local (SUL)	Serves community-wide area.	N/A	Area for specialized or single purpose recreational activities, such as golf courses, plazas in commercial areas, major pools, riverfront park areas, indoor facilities, etc.	Area should be located to meet the special needs of the intended use.
<b>B. COUNTY/REGIONAL SPACE</b>				
6. County Parks (COP)	100 + Acres  5-6 mile service radius  To serve most of the County.	5.0 Acres/1,000	Large properties that contain some active recreation facilities and a large percentage of natural or geographical features.  Target size of 100 or more acres with 50% developed for active recreation.  Located in rural areas but readily accessible to most of the county population.  Travel time within 20 minutes.  Should be located off of major roads.	Capable of providing a range of specific recreational facilities.  Should include unique natural areas of ecological interest.  May meet needs of neighborhood and/or community park for users within a 2-mile radius.

## Parks and Recreation Facilities Inventory

PARK TYPE	TYPICAL SIZE and SERVICE AREA	ACRES/1,000 POPULATION	TYPICAL FEATURES/ FACILITIES	DESIRABLE CHARACTERISTICS
			<p>Destination-oriented parks.</p> <p>Should connect to linear park system.</p>	
7. Nature Parks (NaP)	Size as needed to protect the resource.		<p>Majority of park to remain in its natural state.</p> <p>Facilities should focus on education by use of "nature activities." The facility should reinforce that philosophy by offering habitat enhancement, trails, nature centers, interpretive signage, parking and restrooms.</p> <p>The park should be of sufficient size to protect the natural resource and provide a buffer from offsite conditions.</p>	<p>Should include unique natural areas with ecological interest.</p> <p>Typical size should be over 50 acres for management efficiency.</p>
<b>C. MULTI-COUNTY/REGIONAL SPACE</b>				
8. Multi-County or State Park (SP)	<p>500 + Acres</p> <p>30 + mile service radius</p> <p>To serve several counties or region of the state.</p>		<p>State or multi-county agency operated park with large size.</p> <p>Attracts visitors from multiple counties.</p> <p>Contains some active facilities but primarily offers large areas of natural environments.</p> <p>Main attractions could include a lodge, outstanding natural features, historical features, trail system or other unique characteristics.</p>	Includes unique natural, cultural or ecological features.

## Parks and Recreation Facilities Inventory

---

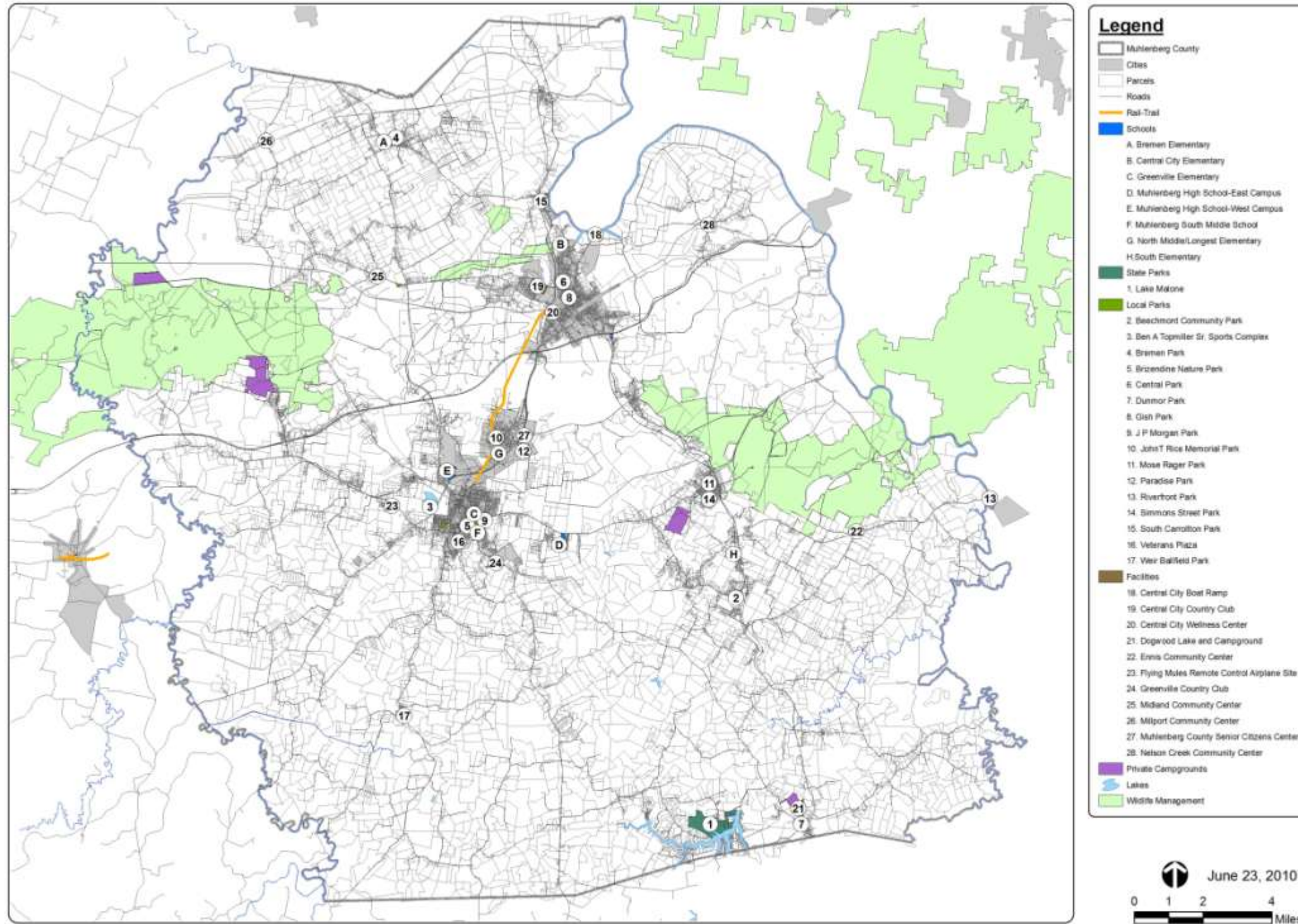
### **B. Overview of Parks and Recreation in Muhlenberg County**

The residents of Muhlenberg County, Kentucky are offered a wide variety of parks, recreation facilities, and programs. The community's needs are currently being met by community parks offered by the County and the cities, school facilities, State Parks, and other facilities within the County . Table 8 provides a summary of the parks and recreation areas and facilities within the County and also indicates the park type category for each existing park. Figure 1 illustrates the locations of the existing parks. The remainder of this section provides a detailed narrative summary of the parks and recreation facilities offered in Muhlenberg County. Aerial photos of the existing parks are provided in Appendix A.

Table 8: Parks and Recreation Areas and Facilities within Muhlenberg County

Site ID	Facility Name	Label	Park Type	Devel. Acres	Total Acres	FACILITIES														Other	
						Tennis Courts	Baseball/ Softball	Volley ball Courts	Foot ball Fields	Soccer Fields	Basketball Courts	Play-ground	Paved Trails (miles)	Unpaved Trails (miles)	Picnic Shelters	Restroom	Swimming Pool	Community Center	Gym		
<b>County &amp; City Facilities</b>																					
Ci	Central City Park & Pool	6	Neighborhood	4.62	4.62						1	2			1		1	1	1	Gazebo; Two tennis courts that are unusable.	
Ci	Gish Park (Central City)	8	Mini-Park	2.31	2.31						1	1			1					Scorer's table adjacent to bball court.	
Ci	Central City Wellness Center	20	Special Use	4.15	4.15													1		Convention center; Wellness center	
Co	Rail-Trail (Greenville to Central City)		Linear	11	11								6								
Ci	J. P. Morgan Memorial Park (Greenville)	9	Neighborhood	10.95	10.95	2					1	3			3	1	1			Fitness course; Amphitheater	
P	Ben Topmiller Park at Lake Luzerne	3	Community	17.44	17.44		4									1				Abandoned ballfield	
Ci	Veterans Plaza (Greenville)	16	Special Use	0.38	0.38															Stage	
Ci	Brizendine Nature Park (Greenville)	5	Nature Park	11.97	11.97									0.5						Currently being developed	
Ci	South Carrollton Park	15	Mini-Park	0.28	0.28							1						1			
Ci	Mose Rager Park (Drakesboro)	11	Mini-Park	0.36	0.36							1								Fountain	
Ci	Simmons Street Park (Drakesboro)	14	Mini-Park	0.31	0.31						1									Dedication plaque	
Co	Paradise Park (Powderly)	12	Community	2.4	11.36							1					1	1		J.M. Kirtley pavilion; Old jail cell; Old School house; Stage; Small concessions stand; Yellow shotgun house; Log cabin structure.	
Ci	Beechmont Community Park	2	Neighborhood	4.57	4.57		1					1					1				
Ci	John T. Rice Park (Powderly)	10	Neighborhood	5.5	5.5						1	2			2			1		Swings; Old ball field w/ no backstop; Footbridge	
Ci	Bremen Park	4	Neighborhood	2.6	2.6							1			1			1			
Co	Dunmor Park	7	Neighborhood	11.6	11.6		1					1	0.5		1						
Co	Muhlenberg County Boat Ramp		Special Use	2	2						2	1								Boat Ramp - Poor condition	
Co	Muhlenburg County Senior Citizens Center	27	Special Use	10.62	10.62																
Co	Riverfront Park (Rochester)	13	Special Use																	Boat Ramp	
Co	Flying Mules Remote Control Airplane Site	23	Special Use	20	20										1					Paved remote control plane runway	
Co	Weir Ballfield Park	17	Neighborhood	6.24	6.24		1				1	1	0.25		1					Baseball field and basketball court recently renovated. New walking trail.	
Co	Midland Community Center	25	Mini-Park	1.62	1.62							1			1			1		Small building	
Co	Ennis Community Center	22	Mini-Park	1.03	1.03							1						1		Former church as community center	
Co	Millport Community Center	26	Mini-Park	0.71	0.71													1		Small building	
Co	Nelson Creek Community Center	28	Mini-Park	1.76	1.76						1	1			1			1			
	<b>Subtotal - County &amp; Cities' Facilities</b>			<b>134.42</b>	<b>143.38</b>	<b>2</b>	<b>7</b>	<b>0</b>	<b>0</b>	<b>0</b>	<b>7</b>	<b>19</b>	<b>6.75</b>	<b>0.5</b>	<b>16</b>	<b>4</b>	<b>2</b>		<b>1</b>		
<b>School Facilities</b>																					
Sch	Bremen Elementary	A	Neighborhood	11.55	11.55		5			1	1	1			1					1	Batting cages
Sch	Central City Elementary	B	Community	25.1	25.1		3				1	2								1	
Sch	Greenville Elementary	C	Neighborhood	4.24	4.24	2					1	1								1	
Sch	MHS - East Campus	D	Special Use	0.8	67.82	6	2		1	1											Lighted band field
Sch	MHS -West Campus	E	Special Use	54.9	54.9		2		1	1											Lighted band field
Sch	South Middle School	F	Special Use	19.3	19.3				1											1	
Sch	North Middle/Longest Elem.	G	Community	16.29	16.29		1		1	3	2	2								1	
Sch	South Elementary	H	Neighborhood	8.16	8.16		2					1				1				1	Concession/Storage building
	<b>Subtotal - School Facilities</b>			<b>115.24</b>	<b>207.36</b>	<b>8</b>	<b>15</b>	<b>0</b>	<b>4</b>	<b>6</b>	<b>5</b>	<b>7</b>	<b>0</b>	<b>0</b>	<b>1</b>	<b>1</b>	<b>0</b>		<b>6</b>		
<b>Other Parks &amp; Facilities</b>																					
St	Lake Malone State Park	1	State	347.79	347.79						1	2									Shuffle board courts; Muhlenberg Conservation Center; Old tennis courts; Basketball court not in use; Pool house building; Marina dock and boat launch
St	Central City Boat Ramp	18	Special Use	0.61	0.61																Boat ramp
P	Greenville Country Club	24	Private	45.24	45.24	2											1				18 hole golf course
P	Central City Country Club	19	Private	93.33	93.33	2											1				Mini golf course; 18 hole golf course
P	Bryan Lake Campground		Private	350	350																100 camp sites, horse trails, beach.
P	Dogwood Lake & Campground	21	Private	70.8	70.8																
	<b>Subtotal - South Area</b>			<b>907.77</b>	<b>907.77</b>	<b>4</b>	<b>0</b>	<b>0</b>	<b>0</b>	<b>0</b>	<b>1</b>	<b>2</b>	<b>0</b>	<b>0</b>	<b>0</b>	<b>2</b>	<b>2</b>		<b>0</b>		
	<b>TOTAL - FACILITIES</b>			<b>1157.43</b>	<b>1258.51</b>	<b>14</b>	<b>22</b>	<b>0</b>	<b>4</b>	<b>6</b>	<b>13</b>	<b>28</b>	<b>6.75</b>	<b>0.5</b>	<b>17</b>	<b>7</b>	<b>4</b>		<b>7</b>		
* = Multi-use field																					
Co = Muhlenberg County Facility      Ci = City owned facility      St=State Park Facility      P = Private Facility      Sch = School Facility																					
<b>Abandoned Parks and Facilities</b>																					
Ci	Pattontown Mini-Park (Central City)	14			0.19							1									Basketball goal on light pole.
	Old South Carrollton Ball Field	17			4.89																3 picnic tables; abandoned baseball field
	Midland Ballfield	12			6.97						1										Abandoned baseball field with restroom/concession bldg, basketball area w/ no rim; Open area
	Penrod Park										1										Abandoned baseball field

Figure 1: Park Locations



**MUHLENBERG COUNTY**  
Parks and Recreation Master Plan

 **Brandstetter Carroll Inc.**  
Architects Engineers Planners  
Lexington Louisville Cincinnati Cleveland

**Park Locations**

# Parks and Recreation Facilities Inventory

---

## C. County and City Facilities

### 1. Community Parks

#### a. Ben Topmiller Park at Lake Luzerne (17.44 Acres)

- (1) Location: Located west of Highway 189, west of downtown Greenville, and adjacent to Lake Luzerne.
- (2) Existing Facilities:
  - Near the entrance is an abandoned ball field in poor condition.
  - The main area of the park includes four ball fields and gravel parking areas. There is also a concession/restroom building.
  - The leagues using the facility indicate there is a problem with the sewers in the area. The ball field lighting is also in need of repair.
  - A second access is located farther north on Highway 189 and provides access to the dam area for fishing.

#### b. Paradise Park (Powderly) (11.36 Acres)

- (1) Location: Located on the Bypass adjacent to the Merle Travis Music Center and the Cooperative Extension Services Office.
- (2) Existing Facilities:
  - The entrance sign into the park indicates the park was established in 1997.
  - One feature of the park is the J.M. Kirtley Pavilion.
  - There is a large picnic shelter, but no good walking path leading to it.
  - The shelter is 33' wide x 50' long.
  - There is a playground structure with plastic edging, which is not complete and there is no safety surfacing under the playground area. It is possible that this was moved from another location.
  - There also appears to be a small jail cell with no explanation and a picnic table in front.

## Parks and Recreation Facilities Inventory

---

- There is an old schoolhouse.
- The Merle Travis birthplace house was moved to this location.
- There is a stage for performances, a small concession stand, a couple of old outhouses, a yellow shot gun house, and a log cabin structure. These had been discussed in some of the Stakeholder Group Meetings.
- A wood sided restroom structure is located near the shotgun house.
- All of these are set in a very pleasant wooded area. The log cabin is on a separate side of a drainage ditch from the rest of the facilities on the side with the Merle Travis Center.

### 2. Neighborhood Parks

#### a. Central City Park and Pool (4.62 Acres)

- (1) Location: Located between Park Street and E. Whitmer Street, east of North Second Street (Highway 431).
- (2) Existing Facilities:
  - The site consists of the swimming pool, a basketball court, a playground area, a gazebo, and two tennis courts that are unusable because they are in poor condition. The pool has been closed.
  - The basketball court is in fair condition, but there are a lot of cracks on the court. The backboards are acceptable.
  - There are two separate playground areas, both of which have rubber mulch. The one closest to the street is a larger piece with two separate pieces and a funnel ball goal. The other one is smaller, and there is also a see-saw and a track ride adjacent to it. The mulch also has a lot of wood mulch mixed in with the rubber, and a lot of the seed pods from the Sycamore trees in the area, which should be removed for safety reasons.
  - Between the two sets of playgrounds there are three large trees and a paved area that was formerly a picnic shelter.



## Parks and Recreation Facilities Inventory

---

- In the playground in the center of the park, one of the bridges has been replaced by 2" x 4"s and plywood, which does not appear to meet CPSC guidelines.
- There is set of six swings that are not considered standard because there are two bays of three, and only two swings per bay are allowed in the standards at this time. The seats are wood planks, which are also not approved by the guidelines, and there is no safety surfacing underneath.
- The rubber mulch has been supplemented with a lot of wood mulch, which defeats the purpose, and there is still a lot of it missing from underneath the track ride area.
- The tennis courts are in very bad shape. There is a net on one, but not the other court. There are a lot of cracks throughout, the color coating is in poor shape, and the fencing is in poor shape. One of the light poles is falling over into the trees adjacent to the courts.
- There is also a lot of erosion on the hillside coming down to the park from the adjacent neighborhood.
- The swimming pool is basically a rectangle with a diving depth at one end down to about 3' at the other end. The decking goes from 15'-20' on the sides.
- The hexagon pavilion has three steps and is not handicap accessible. Some of the railings on the sides are missing. The hexagon is about 20' across. Some of the block is splitting on the base and there is a hole underneath the concrete foundation.
- Parking is along Whitmer Street or a parking lot off of Park Street.
- There are some large trees in this park. One of the oaks adjacent to the parking area has some broken branches that could fall at any time and need to be removed.
- Along the boundary towards the Second Street side of the park, the City has placed metal stakes and orange construction fencing to keep people from falling into the creek and is used to keep balls from the basketball court from going into this area.

## Parks and Recreation Facilities Inventory

---

- There are no real walkways to provide good access to any of the facilities in the park and none of it would be considered handicap accessible because there is a curb at the parking lot area.
- b. J.P. Morgan Memorial Park (Greenville) (10.95 Acres)
- (1) Location: The park is bordered by Chatham Lane on the west, Yonts Street on the north, and Pritchett Drive to the east. The park is east of downtown Greenville.
- (2) Existing Facilities:
- This includes the existing city pool, which was designed by Brandstetter Carroll Inc. Other facilities include three separate areas of playgrounds.
  - Closest to the water tower in the northwest area, there is a set of six swings with no safety surfacing and some metal climbing structures. Adjacent to this is a newer Game Time structure with rubber surfacing and edging. Rubber mulch is spread down the sidewalk.
  - Adjacent to that is a new restroom building, which had just been built and there are also a small and large metal picnic shelters. The small shelter is about 20' x 20'.
  - Immediately adjacent to the larger shelter is a Little Tykes play structure for smaller children.
  - The large picnic shelter is about 35' wide x about 48' long. There is one large grill.
  - Near this is one exercise station from a fitness course. Other stations are located throughout the park.
  - An amphitheater with wood bench seats and a wood stage.
  - There are two tennis courts and a basketball court that look to be in fairly good condition. The tennis courts do have some relatively large cracks in the surfacing. There are some relatively small cracks on the basketball courts that could impact play.
  - There is another small picnic shelter adjacent to the water tower by Yonts Street.

## Parks and Recreation Facilities Inventory

---

- One of the main issues at this park is access. It is a very hilly site making it difficult to get between the facilities with any amount of handicap accessibility.
- c. Beechmont Community Park (4.57 Acres)
- (1) Location: Located behind the fire station on Route 246, west of the intersection with Route 431
  - (2) Existing Facilities:
    - The field is lighted, there is a concrete block bleacher structure with wood seats, metal frame and slats.
    - Concession building.
    - Down the right field line there is a playground structure with plastic timber edging, but no safety surfacing. Grass is growing in the safety surface area and this has not been maintained for a long period of time.
    - At the bottom with the tube slide, some of the bottom portion has been broken off, which could be dangerous.
    - Down the left field line, there is a small restroom facility. There are no walkways leading to this or handicap accessibility.
- d. John T. Rice Park (Powderly) (5.5 Acres)
- (1) Location: Located off of Hillside Road from US Route 62. The site is called the John T. Rice Memorial Park. The park is located directly across the street from the Powderly City Hall. The Rail Trail goes right by the park with a shelter structure identifying the location. It is located at the intersection of Hillcrest Drive and Hillside Road.
  - (2) Existing Facilities:
    - A community center, which is a small metal building with a metal roof that looks relatively new and has a gravel parking lot.
    - Behind the community center there is a small picnic shelter and playground structures. The area has recently been seeded and is not yet established. The main play structure is the same as ones at some of the other parks, and there is also a second area, which has some additional features.

## Parks and Recreation Facilities Inventory

---

- There is also a small metal picnic shelter. The surface is gravel underneath the shelter. The picnic shelter is 20' x 24'. The roof is about six feet high on the sides.
- Adjacent to this is the other play structure. This structure includes a climbing structure which looks to be the same as the other structure, but it also has a fabric roof and there is also a climbing structure.
- Adjacent to the play equipment is an area that looks like it was a stage for performances, but it has fallen apart.
- There are some landscape beds along the front of the park.
- There is additional land in this area for other facilities if desired.
- Down Hillside Road are some additional facilities. The first area of facilities includes a basketball court that is completely fenced in and a set of old swings. The fencing looks new. The pavement on the basketball court looks to be relatively new. The only entrance is on the side closest to the picnic area, but the parking is on the opposite side, so it makes no sense as to where this entrance is located. There are no lines on the basketball court, but the pavement is probably new so they might not have had a chance to do this yet.
- The swing set has four strap swings with no safety surfacing.
- Up the hill from the basketball court is an area that was formerly a ball field with wood poles and lights, but there is no backstop.
- The parking area adjacent to the basketball court is just a gravel area, which might hold ten cars.
- The park extends up to Tipple Street along Hillside Road. There is a gravel parking area as well. There is also a small foot bridge leading over to the Rail Trail.

## Parks and Recreation Facilities Inventory

---

- e. Bremen Park (2.6 Acres)
- (1) Location: Located at the intersection of Buttermilk Road and Highway 81.
  - (2) Existing Facilities:
    - There is one large picnic shelter, a relatively new playground with crushed rubber surfacing, and a community center. The picnic shelter is 60' by 28'. What was a basketball court area is now just a gravel surface.
    - There is a large gravel parking lot adjacent to the community center.
    - Access is off of College Street at the intersection of Route 81 and Buttermilk Road.
    - This site adjoins Bremen Elementary School.
    - There is relatively a large amount of open space surrounding this site, which could be used for other park and recreation purposes.
- f. Dunmor Park (11.6 Acres)
- (1) Location: Located on Schoolhouse Lane in the Dunmor area off of Highway 431 in the extreme southern end of the County
  - (2) Existing Facilities:
    - A baseball diamond with wood poles and lights, a gravel walking trail, a small picnic shelter, and a new playground. There is also a small stage area.
- g. Weir Ballfield Park (6.24 Acres)
- (1) Location: Located on Route 171 across from Cherry Grove Church. In the southwestern area of the county.
  - (2) Existing Facilities:
    - One new playground and several facilities that were redeveloped in 2010 including new fencing on the ball field, basketball court pavement, loop trail, and walkways to the spectator area.
    - There is a gravel parking lot.

## Parks and Recreation Facilities Inventory

---

- There are wood poles and lights on the ball field. There is also a concession building located behind the former backstop.

### 3. Mini-Parks

#### a. Gish Park (Central City) (2.31 Acres)

(1) Location: Located on Render Avenue south of Pendleton Street. It is located between Render Avenue and the railroad tracks.

(2) Existing Facilities:

- The site consists of a playground area that has plastic edging, but none of the wood mulch is still in place. There are some rubber tiles, but they have been displaced and the surface is down to the fabric below it, therefore there is no safety surface to speak of. There is also a small sandbox area to the side, which is empty.
- The access from the road is poor with a ditch making access difficult except for one small area where maintenance access is provided and is blocked off with a chain.
- In the playground, there is also a set of four swings. There is rubber tile underneath each one but no safety surfacing around it.
- The park also has a basketball court, one small picnic shelter with two small tables, and two other sets of swings that are currently unusable. There is a small scorer's table that is adjacent to the basketball court.
- There is a small parking lot adjacent to the railroad tracks with access off of Pendleton Street.

#### b. South Carrollton Park (0.28 Acres)

(1) Location: Located on Clark Street at Carroll Street in South Carrollton about one block off of Highway 431. This site backs up to the railroad tracks on one side and the back of the residential streets on the other.

(2) Existing Facilities:

- This park consists of a community center and playground.

## Parks and Recreation Facilities Inventory

---

- The playground is a relatively new wood structure with a crumb rubber surfacing and rubber edging. A lot of the surfacing is outside of the edging, and should be maintained. Although this is a relatively new structure, the swings do not meet the current CPSC guidelines as they are too close together, and the safety surfacing might not be wide enough for the swings. The edging definitely does not reach six feet outside of the equipment. The equipment is by Rainbow Play Systems Inc.

c. Mose Rager Park (Drakesboro) (0.36 Acres)

- (1) Location: The site is located off of Highway 176 east of US 431, off of Mose Rager Road. The main part of the park is across from the City Hall.

The new playground equipment is located adjacent to the City Hall across the street from the park.

(2) Existing Facilities:

- The picnic shelter is 15' x 25' and has two tables inside and there are two large grills on the outside. There is also a small gazebo next to the shelter and a fountain area.
- The end of the park closest to Route 431, there is a plaque to Mose Rager stating "A unique personality and legendary country music thumbpicker, who is known as "Kentucky's Shy Guitar Master." He was a country music pioneer and legendary musician in his own right, who enjoyed everyday being himself. Merle Travis once said of Mose, "We are all imitations of the greatest" The plaque was erected in 1992 by the City of Drakesboro Kentucky Bicentennial Commission.
- There is a fountain in the center of the park with three flagpoles and four posts with guitars on them.

d. Simmons Street Park (Drakesboro) (0.31 Acres)

- (1) Location: Located just south of Buffalo Drive on Simmons Street.

(2) Existing Facilities:

- One picnic shelter, a basketball court, one sign and a plaque.

## Parks and Recreation Facilities Inventory

---

- A small paved parking lot.
  - The shelter is approximately 45' long x 17' wide.
  - There are two large grills.
  - The basketball court is fenced on three sides, but there is a ditch you have to cross to get over to the courts.
  - Drakesboro Community High School Memorial
    - The High School was closed in 1964.
    - A monument is in one corner of the park.
  - There is a plaque in another corner of the park dedicated to some African American people in the community including: Reggie Warford, H.C. Mathis; William Taylor, the last Principal of the high school; Edgar Goins, the first African American appointed chairman of the Kentucky Commission of Human Rights; Earl Frazier, the first African American elected to City Council in Kentucky; Marnell C. Morman, first African American President of the Kentucky Education Association; Leslie Shivley, first African American Historian in Muhlenberg County; Daniel Washington, first African American Mayor of Drakesboro.
- e. Midland Community Center (1.62 Acres)
- (1) Location: Located on Route 70 east of Ridge Road.
  - (2) Existing Facilities:
    - The site includes a small building, one picnic shelter, one new playground set similar to the others, and an unmarked parking lot of asphalt.
    - The picnic shelter is new and has three picnic tables. The overall shelter size is 15' wide x20' long. The building is 40' long by about 33' deep.
- f. Ennis Community Center (1.03 Acres)
- (1) Location: Located on Route 70 east of the intersection with Route 2270.
  - (2) Existing Facilities:



## Parks and Recreation Facilities Inventory

---

- This is formerly the Allan's Chapel United Methodist Church until 1999.
  - This is a vinyl sided country church. It is on two floors with a walkway down to the basement area. Behind it there is a swing set, a metal slide, and four picnic tables.
- g. Millport Community Center (0.71 Acres)
- (1) Location: Located on Route 423 north of the railroad tracks.
  - (2) Existing Facilities:
    - Consists of a small building and an asphalt paved parking lot with no signage.
    - There is parking for 35 cars.
- h. Nelson Creek Community Center (1.76 Acres)
- (1) Location: Located on Route 1379 adjacent to the railroad tracks.
  - (2) Existing Facilities:
    - The facilities include the community center, picnic shelter, new playground similar to others, and one basketball goal.
    - There is a very large paved parking lot at the site.
    - The picnic shelter is 22' wide x 40' long. There is a large grill and two picnic tables.
    - The community center is approximately 33' wide x 42' long. Similar to the other buildings, it is mainly a large open room with a couple of restrooms for multi-purpose use.
4. Special Use Parks
- a. Central City Wellness Center (4.15 Acres)
- (1) Location: Located on Golden Tide Avenue between West Third and West Fourth Avenue.
  - (2) Existing Facilities:

## Parks and Recreation Facilities Inventory

---

- This site is the northern terminus of the Rail Trail.
  - Convention Center
  - Wellness Center
- b. Veterans Plaza (Greenville) (0.38 Acres)
- (1) Location: Located on the site of the former Court Row between Main Street and Court Street.
  - (2) Existing Facilities:
    - The brick paved plaza includes a small stage, benches, decorative lights and veterans' monuments.
    - The summer concert series is held at this location.
- c. Muhlenberg County Boat Ramp (2 Acres)
- (1) Location: Located along Highway 70 at the Green River.
  - (2) Existing Facilities:
    - This site includes an overlook area of the Old Lock and Dam, playground area, and a boat launch ramp.
    - The playground consists of three swings, a merry go round, steel slide, and one overhead ladder. None of this has safety surfacing and the swings do not meet current guidelines. There are also three picnic areas in the park near the playground, and on the opposite side from the boat launch ramp there are more tables.
    - There is a loop drive as you first enter the park, but no parking area for the playground. There are excellent views of the lock and dam area. In an area just up the road, above the dam, there is a paved parking area and a couple of tables and a grill. You can see that there is a concrete boat launch ramp on the opposite side of the river in the Rochester community.
    - This is a very poor boat ramp. It must be accessed from a very windy, bumpy, gravel and rock embankment. This makes the boat ramp very difficult to traverse with a vehicle and trailer.

## Parks and Recreation Facilities Inventory

---

- d. Flying Mules Remote Control Airplane Site (2.0 Acres)
    - (1) Location: Located on Route 62 west of the Route 189 Bypass near Greenville.
    - (2) Existing Facilities:
      - This relatively new site includes a gravel parking lot, paved runway, and a shelter.
  - e. Central City Boat Ramp (0.61 Acres)
    - (1) Location: Located on Bluff Cemetery Road northeast of Central City.
    - (2) Existing Facilities:
      - The small boat ramp was developed with Fish and Wildlife Funds and is maintained by Muhlenberg County.
      - One lane paved boat ramp on the Green River.
      - Gravel parking lot.
5. Linear Parks
- a. Rail-Trail (Greenville to Central City) (11 Acres)
    - (1) Location: The 6 mile long trail has one terminus near Greenville and the other at the Central City Convention Center. The trail travels through Powderly.
    - (2) Existing Facilities:
      - The trail is about six feet wide asphalt paved trail on a former railroad bed. Portions at the ends in Greenville and Central City are lighted. On the Greenville end, there is a paved parking lot, bulletin board sign, covered footbridge, and old train car. There is a gravel parking lot at the Central City end.
6. Nature Parks
- a. Brizendine Nature Park (Greenville) (11.97 Acres)
    - (1) Location: The new park is located just west of Muhlenberg South Middle School and south of J.P. Morgan Park near downtown Greenville. Access is off of Chatham Lane near Pritchett Drive into a new asphalt parking lot.

## Parks and Recreation Facilities Inventory

---

(2) Existing Facilities:

- This recently developed park includes nature trails, footbridges, benches, and signage. Plans call for a meandering stream. The park has been an Eagle Scout project for several youth in the community.

### D. School Facilities

1. Central City Elementary (25.1 Acres)

a. Location: Located on Route 1031 north of Central City.

b. Existing Facilities:

- (1) The site includes two playgrounds, one for general use and one for smaller children. The one for smaller children has a trike trail around it and is fenced in with wood mulch. The other playground has crumb rubber mulch with newer equipment.
- (2) There is also a basketball court area with two goals.
- (3) Three baseball fields.
- (4) The gym has a separate entrance from the exterior, which is ideal for community use and includes the gymnasium area, stage, restrooms, and concession stand.
- (5) The ball field complex includes three fields, one batting cage with a fenced in enclosure, pad for a second cage or other structure that has not been built yet, a concession stand, covered dugouts and bleacher areas, and a maintenance garage. The bleacher structure says CCYAA on the sides. There are restrooms in the building as well. Each of the fields has a scorekeeper's table behind the backstop. Field one is the field closest to the gym, field two is in the center, and field three is farthest away from the school. Fields one and two have fences at 200' on the lines and 205' in the center.
- (6) All three of the fields have lights on wood poles.
- (7) There are several lights laying on the ground between fields two and three. The lights were probably brought here to be reused from another site.
- (8) There is a gravel roadway that provides access behind all three fields. One concern for this area would be parking since this is a school parking lot and that field number

## Parks and Recreation Facilities Inventory

---

three is far from the parking lot. Portions of the drive are old asphalt.

### 2. North Middle/Longest Elementary (16.29 Acres)

a. Location: Located on Main Street (US 62) at Copper Creek Drive in the southern end of Powderly.

b. Existing Facilities:

(1) Behind the school there is a large area with athletic facilities including a very large playground area with many swings and one baseball backstop. A portion of the parking lot serves as two basketball courts with a total of four goals. The area directly behind the school, where the baseball backstop is located, there are three sets of soccer goals. There is a separate older playground area for smaller children behind the portion of the school further towards Greenville.

(2) The backstop is rusty and there are no dugouts or benches.

(3) The area between the backstop and the shopping center where there is a Kroger, there are several soccer fields and a restroom/concession building.

(4) The Technology Center is at the other end of this site. Between the Technology Center and the bypass there is a football field or band practice field, but it does have goal posts. There is also a press box overlooking the structure, bleachers, and a scoreboard.

### 3. Bremen Elementary (11.55 Acres)

a. Location: Located off of Main Street (Highway 81) west of Bremen Community Park

b. Existing Facilities:

(1) Behind the school there are two lighted baseball fields, a basketball court with four goals, and paving that is in poor condition. The goals cross each other. One of the outfields of the baseball field is used as a soccer field. There are also batting cages.

(2) Behind the main portion of the school there is a small basketball court, and a large amount of playground equipment. There is also a small picnic shelter area.

## Parks and Recreation Facilities Inventory

---

- (3) Behind the ballfields there is also a soccer field, which has a couple of lights. The lighting on all of the fields looks to be fairly poor.
  - (4) This site will be completely redeveloped after the new Bremen Elementary School is built.
- 4. Greenville Elementary (4.24 Acres)
  - a. Location: Located on East Main Street in Greenville. East Trowsbridge Street is the north boarder, and College Street and Blackhawk Drive are the west and east boundaries.
  - b. Existing Facilities:
    - (1) Large playground
    - (2) One basketball court
    - (3) Two tennis courts
- 5. South Elementary (8.16 Acres)
  - a. Location: Located on US 431 between Beechmont and Drakesboro.
  - b. Existing Facilities:
    - (1) This site includes two relatively new baseball fields with concrete block dugouts, lights on metal poles, a restroom/concession building, storage area, and good ballfields. There is a road access to a future parking area, but has not been finished yet. All of the area between the two fields is gravel. There is netting above the right and left field fences to keep balls out of the roads and parking areas adjacent to the site.
    - (2) Behind the school there is a large climbing structure and playground, and also large sets of swings.
- 6. Muhlenberg High School – East Campus (67.82 Acres)
  - a. Location: Located off of State Route 176, east of Greenville
  - b. Existing Facilities:
    - (1) Six tennis courts (lighted)
    - (2) Lighted baseball field

## Parks and Recreation Facilities Inventory

---

- (3) Lighted softball field
  - (4) Lighted soccer field
  - (5) Lighted football field
  - (6) Lighted band field
7. Muhlenberg High School – West Campus (54.9 Acres)
- a. Location: Located along the Bypass with access also to Kentucky 181, and north of Kentucky 64 – Depot Street. Dean Road forms the eastern boundary of portions of the site.
  - b. Existing Facilities:
    - (1) Lighted football field
    - (2) Lighted baseball field
    - (3) Lighted softball field
    - (4) Lighted band field
    - (5) Lighted soccer field
8. South Middle School (19.3 Acres)
- a. Location: Located on Pritchett Drive south of Morgan Memorial Park in Greenville.
  - b. Existing Facilities: Lighted football stadium.

### **E. Other Parks and Facilities**

1. Lake Malone State Park (347.79 Acres)
- a. Location: The entrance to Lake Malone State Park is off of Route 973 in the south central part of Muhlenberg County. The park has a large picnic area, a campground, and a beach area.
  - b. Existing Facilities:
    - (1) At the campground area there is a playground, picnic shelter, basketball court, shuffle board courts, and a large picnic shelter. There is another playground area closer toward the campground area.
    - (2) There is also a private Muhlenberg County Conservation Club in this area, which is for members only.

## Parks and Recreation Facilities Inventory

---

- (3) Across the road from the entrance to the park, there are a couple of old tennis courts and an old basketball court that are no longer in use that are probably part of a private development.
  - (4) The entrance to the boat launch and the beach area is further east of the main park entrance. There is a bathhouse building where the concession stand is adjacent to the small beach area. There is also a marina dock and boat launch ramp in this area.
  - (5) The lake is surrounded by private homes on the opposite sides.
  - (6) A sign indicates that the Kentucky Department Division of Fish and Wildlife owns within 50' of the lake edge all around the lake.
2. Greenville Country Club (45.24 Acres)
    - a. Location: Located on Kentucky Route 215, south of Greenville
    - b. Existing Facilities:
      - (1) 18 hole golf course
      - (2) Swimming pool
      - (3) Two tennis courts
  3. Central City Country Club (93.33 Acres)
    - a. Location: Located west of Central City on Country Club Drive off of Front Street (Kentucky 70). The golf course extends north to West Whitmer Street.
    - b. Existing Facilities:
      - (1) 18 hole golf course
      - (2) Swimming pool
      - (3) Two tennis courts



## Parks and Recreation Facilities Inventory

---

### F. Abandoned Parks and Facilities

1. Pattontown Mini-Park (Central City) (0.19 Acres)
  - a. Location: On Fruit Hill southwest of the intersection of Second Street and Everly Brothers Blvd. in Central City
  - b. Existing Facilities: Old play equipment that is no longer used. The old equipment should be removed for safety reasons and the sign on Everly Brothers Blvd. removed if this is no longer intended to serve as a park.
2. Old South Carrollton Ball Field (4.89 Acres)
  - a. Location: Located at the east end of Sinking Water Lane and east of Main Street in South Carrollton.
  - b. Existing Facilities:
    - (1) Abandoned baseball/softball field, restroom/concession building, picnic shelter and picnic tables.
3. Midland Ballfield (6.97 Acres)
  - a. Location: Located between Central City and Midland Community Center and west of the intersection of Routes 70 and 181.
  - b. Existing Facilities:
    - (1) There is a small gravel parking lot and a field with concrete block dugouts and a concession stand building.
    - (2) There are old style lights on wood poles with the same lights aimed in the wrong directions.
    - (3) There is also one basketball goal area that has no rim and is just a grass area.
    - (4) The outfield fence appears much longer than a Little League sized fence, therefore this is probably for Babe Ruth age or for adult softball.
    - (5) There is more open land here than just the ballfield area, which could be considered for a park. This is located a little west of the Junction with Route 181.

## Parks and Recreation Facilities Inventory

---